

# Sloan Special Finishes

Creating unique, elevated, and inspired spaces with durable product finishes that highlight restroom designs

# Presenters



**Mary Phelps**  
Strategic Account Manager  
Sloan Valve Company  
Houston, TX



**Jared Strowbridge**  
Regional Sales Manager,  
Sloan Valve Company  
Hackettstown, NJ



**Andrew Warnes**  
Technical Training Manager  
Sloan Valve Company  
Franklin Park, IL

# Agenda

## What we'll discuss today:

- What are Sloan special finishes and how are they made?
- How Sloan special finishes differ from other coating technologies
- What products are available in special finishes?
- Examples of Sloan special finish installations
- Samples and demo units
- How to order special finishes
- Questions and answers

## Items that we will not cover:

- Mentioning other manufacturers by name



[AD-82000](#) with PVD Graphite [EFX-250](#), [ESD-500](#)

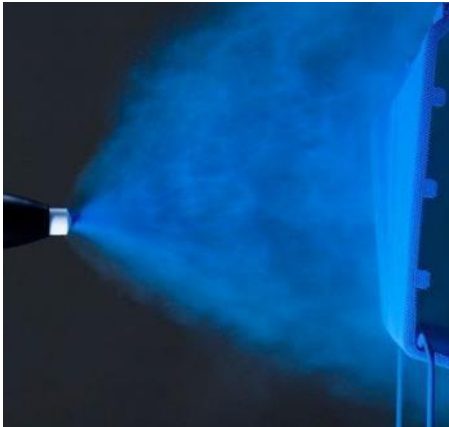
# Attendee Poll

results at the end of this webinar

What special finish colors are you seeing more and more of in the market today?



# Product Finishing Methods



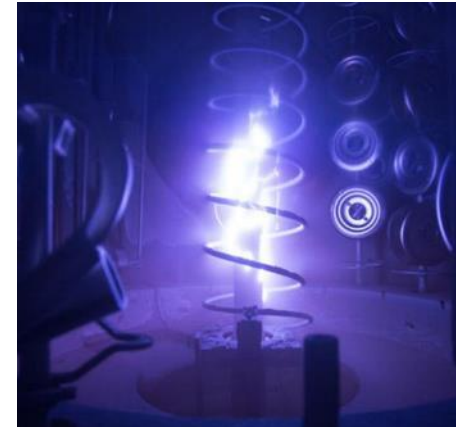
Powder/Epoxy Coat



Immersion/Black Zinc Plating



Chrome Plating



Physical Vapor Deposition (PVD)

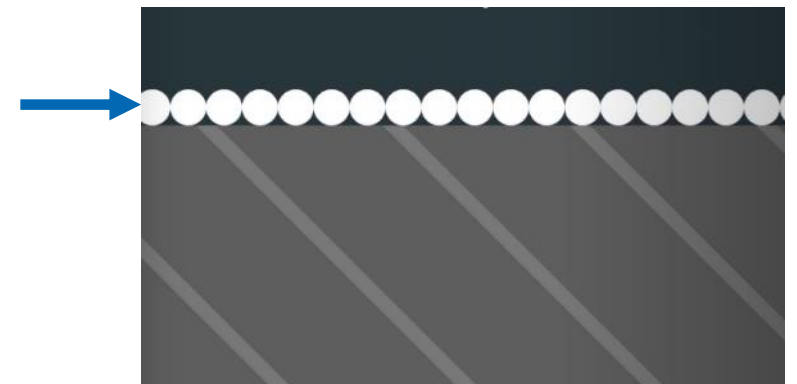
# How are Sloan PVD Special Finishes Made?

1. Components are placed in a vacuum chamber
2. After all air is eliminated the chamber is heated to +/- 450°F
3. The parts are brushed with Argon gas to remove impurities
4. Energy is applied to a mix of compounds to create a hot plasma that bombards the parts with ions (atoms)

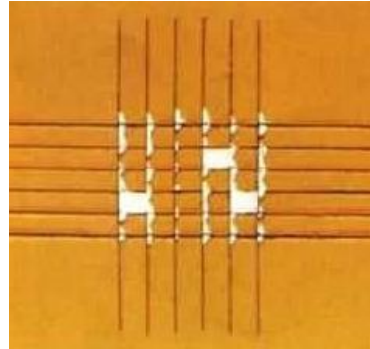


# What are Sloan Special Finishes & How are They Made?

5. The atoms join with the components at an atomic level to form a film only microns thick on the surface
6. The parts spin on a “gimbel” so that all sides are coated evenly
7. The chamber is cooled gradually so that parts do not distort as they lose heat



# Product Finish Comparisons



	Powder/Epoxy Coat	Immersion/Black Zinc Plating	Chrome Plating	Physical Vapor Deposition (PVD)
Resistance to Abrasion	✗ ✗ ✗	✗	✓	✓ ✓ ✓
Resistance to Chemicals	✗ ✗ ✗	✗ ✗	✓	✓ ✓ ✓
Resistance to Fading and Oxidation	✗ ✗ ✗	✗ ✗ ✗	✓ ✓	✓ ✓ ✓
Resistance to Flaking and Bubbling	✗ ✗ ✗	✗ ✗	✓	✓ ✓ ✓
Longevity and Durability	✗ ✗ ✗	✗ ✗	✓ ✓	✓ ✓ ✓



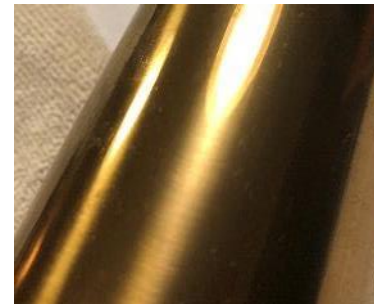
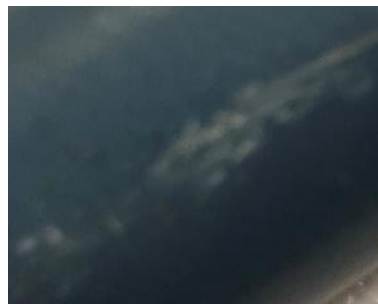
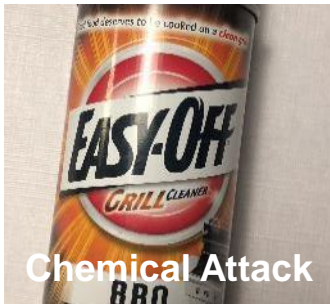
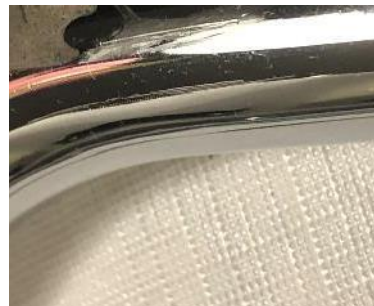
# Product Finish Challenge

Powder/Epoxy Coat

Chrome Plating

Physical Vapor  
Deposition (PVD) 1

Physical Vapor  
Deposition (PVD) 2

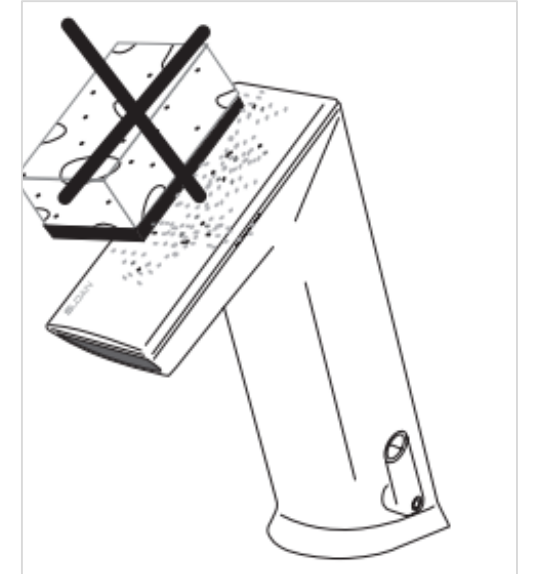


# Care & Cleaning

DO NOT USE abrasive or chemical cleaners (including chlorine bleach) to clean faucets that may dull the luster and attack the chrome or special decorative finishes.

Use ONLY mild soap and water, then wipe dry with clean cloth or towel. While cleaning the bathroom tile, protect the faucet from any splattering of cleaner.

Acids and cleaning fluids will discolor or remove chrome plating.



# What Sloan Products are Available in Special Finishes?

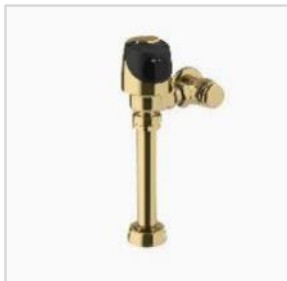


[DSCT-86000](#) with PVD Polished Brass [EAF-275](#) and [ESD-2000](#)

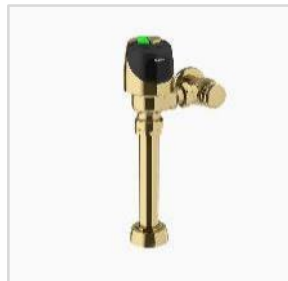
# PVDPB Polished Brass Flushometers



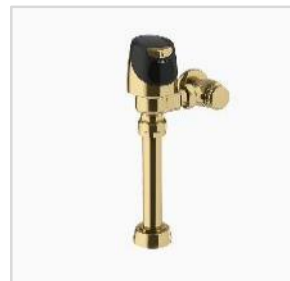
Royal Manual  
Flushometer  
(111, 186)



G2 Sensor  
Flushometer  
(8111, 8186)



ECOS Sensor  
Flushometer  
(8111, 8186)



SOLIS Sensor  
Flushometer  
(8111, 8186)



Royal ESS  
Hardwired  
Flushometer  
(111, 186)



CX Manual  
Flushometer  
(158, 198)



CX Sensor  
Flushometer  
(8158, 8198)

# PVDBP Polished Brass Faucets & Soap Dispensers



3365658BT ETF-600-P  
Electronic Faucet  
PVDPB



3315077BT EBF-650  
Battery Faucet  
PVDPB



3335117 EAF-275-ISM  
CP Battery Faucet  
W/MIX PVDPB



3324483  
EFX-250.000.0000  
PVDPB



3324481  
EFX-250.500.0000  
PVDPB w/ ISM



3346146 ESD-600  
Soap Dispenser  
with Soap PVDPB



3346145 ESD-2000  
Soap Dispenser with  
Soap PVDPB



3346083 ESD-400  
BASYS Soap  
Dispenser PVDPB



3346144 ESD-500  
BASYS Soap Dispenser  
with Soap PVDPB

Matching 4" and  
8" Trim Plates  
Available  
To convert EFX  
BASYS faucets  
to Hardwired add  
0335009 EAF11  
Adapter Plug

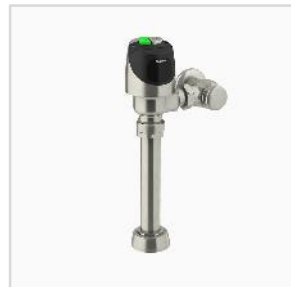
# PVDBN Brushed Nickel Flushometers



Royal Manual  
Flushometer  
(111, 186)



G2 Sensor  
Flushometer  
(8111, 8186)



ECOS Sensor  
Flushometer  
(8111, 8186)



SOLIS Sensor  
Flushometer  
(8111, 8186)



Royal ESS  
Hardwired  
Flushometer  
(111, 186)



CX Manual  
Flushometer  
(158, 198)



CX Sensor  
Flushometer  
(8158, 8198)

# PVDBN Brushed Nickel Faucets & Soap Dispensers



3365697 ETF-600-P  
Electronic Faucet  
PVDBN



3315249 EBF-650  
Battery Faucet  
PVDBN



3335070 EAF-275-ISM  
Battery Faucet w/Mix  
PVDBN



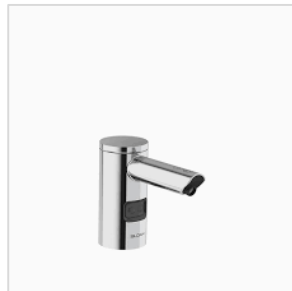
3324478  
EFX-250.000.0000  
PVDBN



3324480  
EFX-250.500.0000  
PVDBN w/ ISM



3346140 ESD-600  
Soap Dispenser  
with Soap PVDBN



3346139 ESD-2000  
Soap Dispenser  
with Soap PVDBN



3346081 ESD-400  
BASYS Soap Dispenser  
PVDBN



3346138 ESD-500  
BASYS Soap Dispenser  
with Soap PVDBN

Matching 4" and 8" Trim Plates Available  
To convert EFX BASYS faucets to Hardwired add 0335009 EAF11 Adapter Plug

# PVDSF Brushed Stainless Flushometers



Royal Manual  
Flushometer  
(111, 186)



G2 Sensor  
Flushometer  
(8111, 8186)



ECOS Sensor  
Flushometer  
(8111, 8186)



SOLIS Sensor  
Flushometer  
(8111, 8186)



Royal ESS  
Hardwired  
Flushometer  
(111, 186)



CX Manual  
Flushometer  
(158, 198)



CX Sensor  
Flushometer  
(8158, 8198)



# PVDSF Brushed Stainless Faucets & Soap Dispensers



3365657 ETF-600-P  
Electronic Faucet  
PVDSF



3315193 EBF-650  
Battery Faucet  
PVDSF



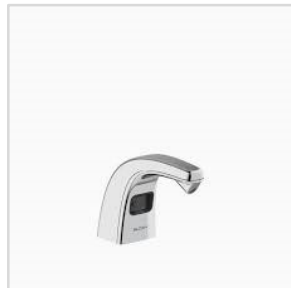
3335092 EAF-275-ISM  
Battery Faucet w/Mix  
PVDSF



3324482  
EFX-250.000.0000  
PVDSF



3324468  
EFX-250.500.0000  
PVDSF w/ ISM



3346143 ESD-600  
Soap Dispenser  
with Soap PVDSF



3346142 ESD-2000  
Soap Dispenser with  
Soap PVDSF



3346082 ESD-400  
BASYS Soap  
Dispenser PVDSF



3346141 ESD-500  
BASYS Soap Dispenser  
with Soap PVDSF

Matching 4" and  
8" Trim Plates  
Available  
To convert EFX  
BASYS faucets  
to Hardwired add  
0335009 EAF11  
Adapter Plug

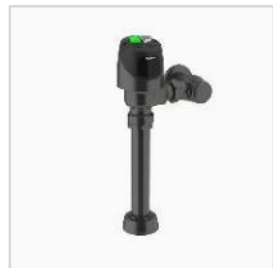
# PVDGR Graphite Flushometers



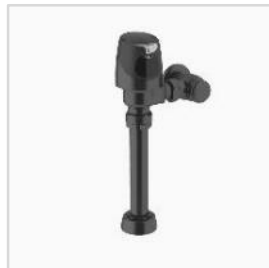
Royal Manual  
Flushometer  
(111, 186)



G2 Sensor  
Flushometer  
(8111, 8186)



ECOS Sensor  
Flushometer  
(8111, 8186)



SOLIS Sensor  
Flushometer  
(8111, 8186)



Royal ESS  
Hardwired  
Flushometer  
(111, 186)



CX Manual  
Flushometer  
(158, 198)



CX Sensor  
Flushometer  
(8158, 8198)

# PVDGR Graphite Faucets and Soap Dispensers



3365659BT ETF-600-P  
CP Electronic Faucet  
PVDGR



3315374BT EBF-650  
CP Battery Faucet  
PVDGR



3335148 EAF-350  
PVDGR Electronic  
Faucet 0.5 gpm PVDGR



3335149 EAF-250-ISM  
PVDGR Electronic  
Faucet 0.5 PVDGR



3324491  
EFX-250.500.0000  
PVDGR w/ ISM



3346155 ESD-600  
Soap Dispenser  
with Soap PVDGR



3346156 ESD-2000  
Soap Dispenser  
with Soap PVDGR



3346182 ESD-400  
BASYS Soap  
Dispenser PVDGR



3346154 ESD-500  
BASYS Soap Dispenser  
with Soap PVDGR

Matching 4" and  
8" Trim Plates  
Available  
To convert EFX  
BASYS faucets  
to Hardwired add  
0335009 EAF11  
Adapter Plug

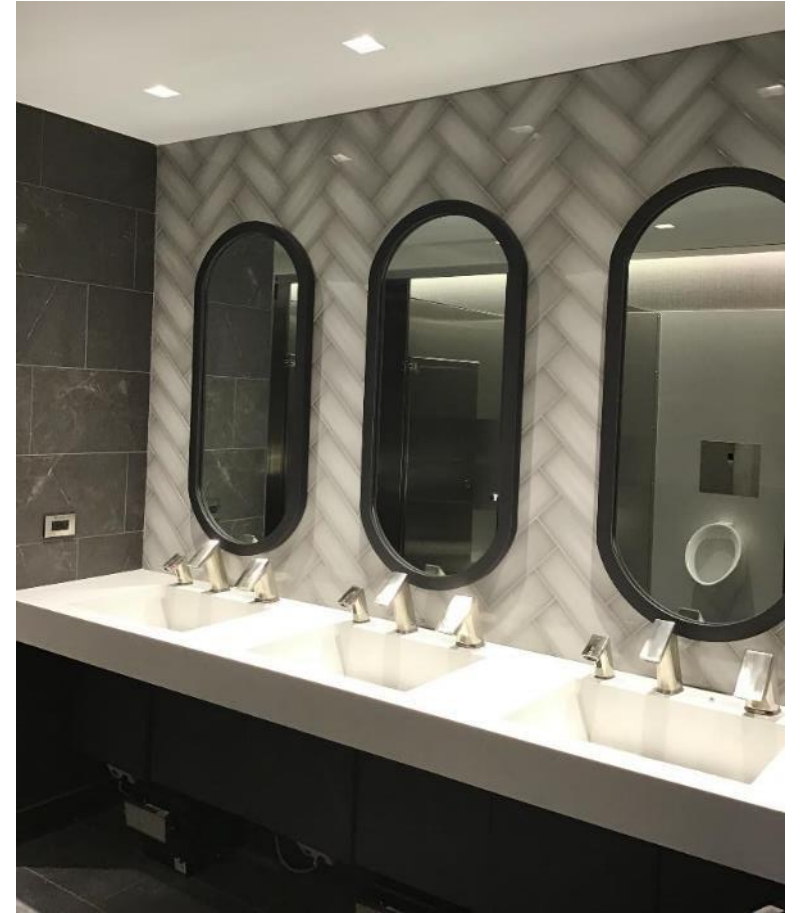
# PVDPB Polished Brass Inspiration



# PVDPB Polished Brass Inspiration



# PVDBN Brushed Nickel Inspiration



# PVDSF Brushed Stainless Inspiration



# PVDGR Graphite Inspiration



Image courtesy of Lazy Dog,  
Vernon Hills, IL



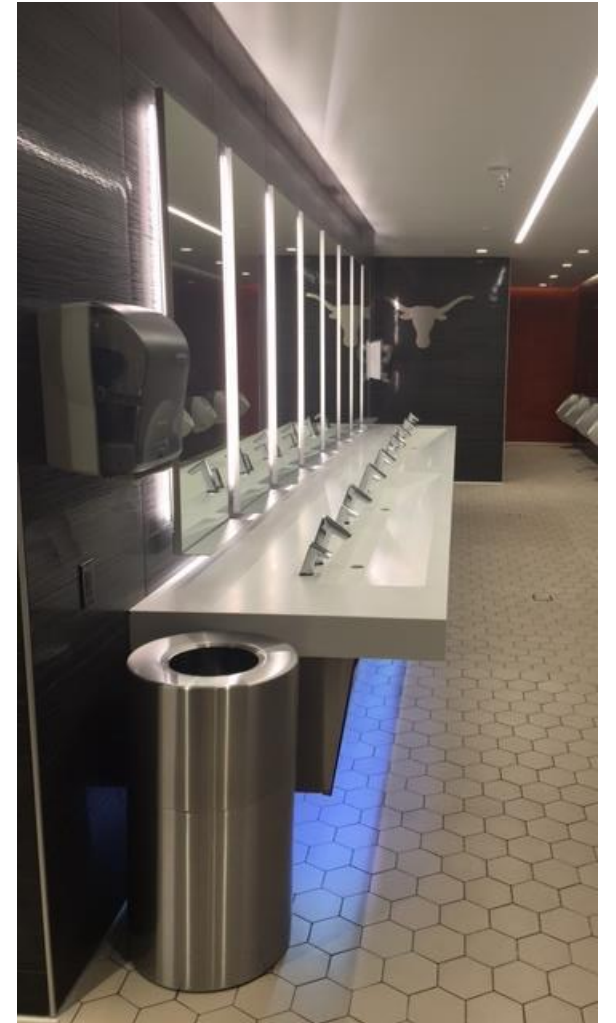


# Other Inspirations



Two-tone [AD-82000](#) with [EFX-250](#) and [ESD-400](#)

# Other Inspirations



# Other Inspirations



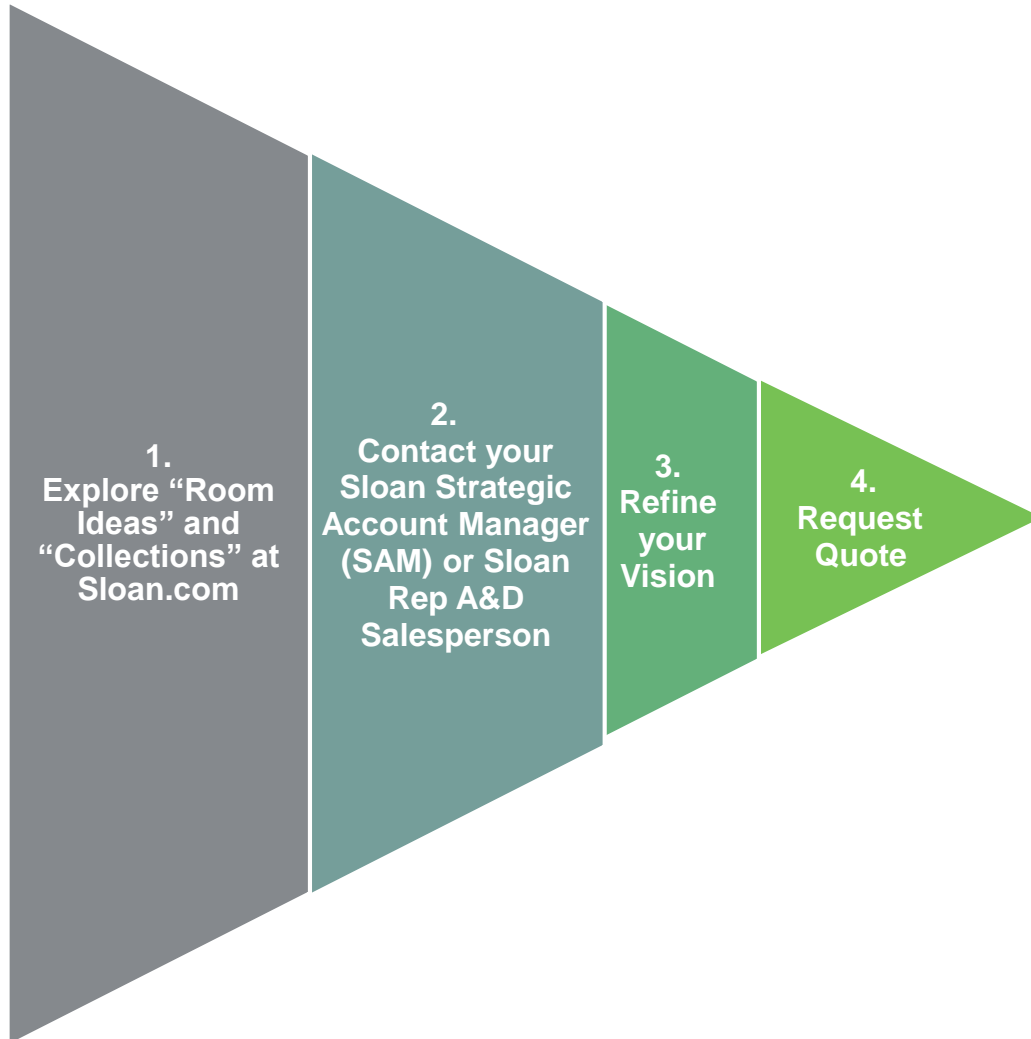
# Other Inspirations



# Other Inspirations



# How to Order Sloan Special Finishes



# Custom Special Finish Requests

- Must be pre-approved on a case-by-case basis by the Sloan Product Line Manager (PLM) prior to quoting
- Subject to Minimum Order Quantities (MOQ) and Special Order terms and conditions including cancellation, change order and restocking charges
- Subject to extended lead times of 12 weeks or more

Contact your local Sloan Representative A&D Salesperson or Strategic Account Manager for more information about custom requests

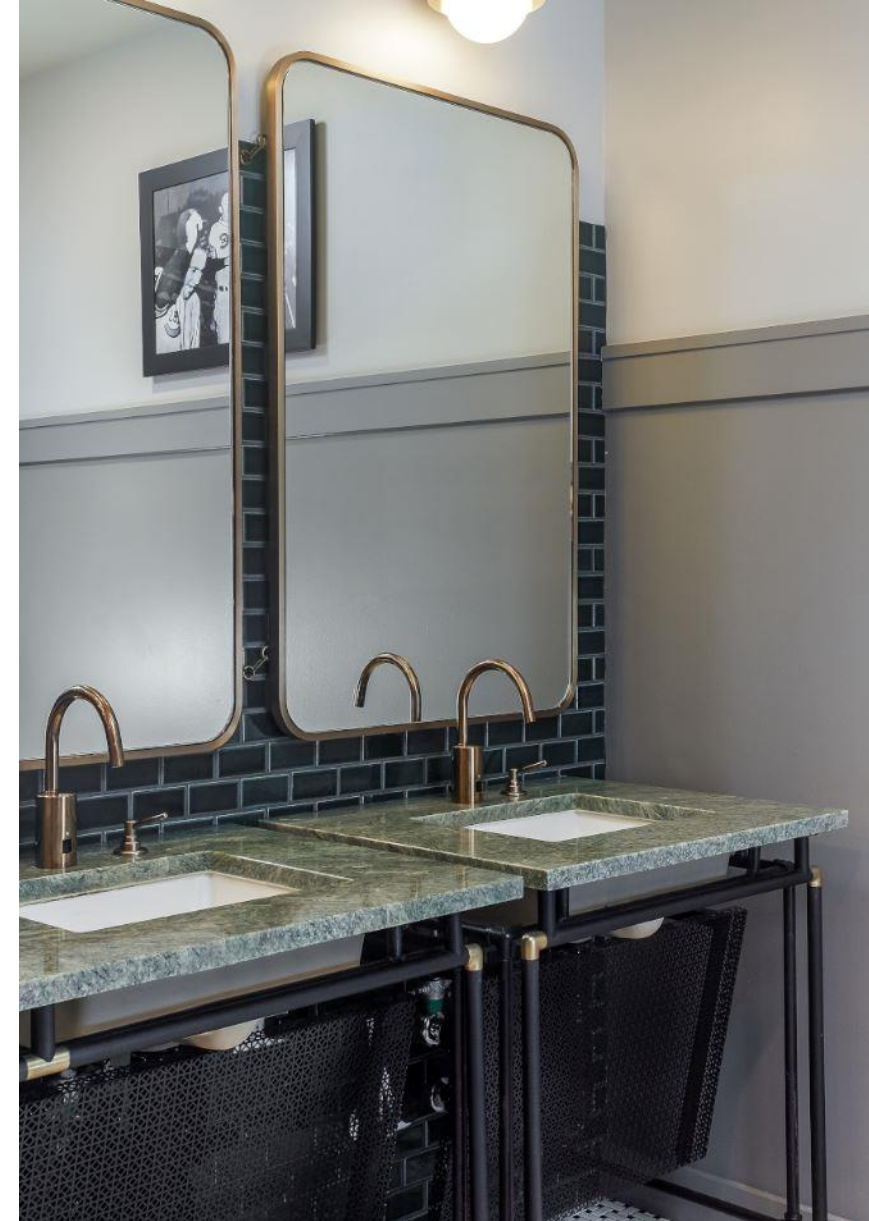
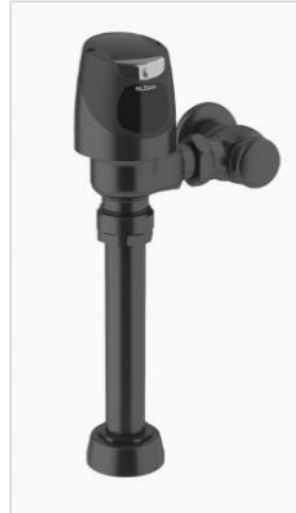


Image courtesy Hotel Zachary, Chicago, IL

# Samples & Demo Units



Your local Sloan Rep A&D Salesperson and your Sloan Strategic Account Manager (SAM) have special finish sample units and other materials available to help select a special finish.

Contact either for loaners and samples.



# Summary

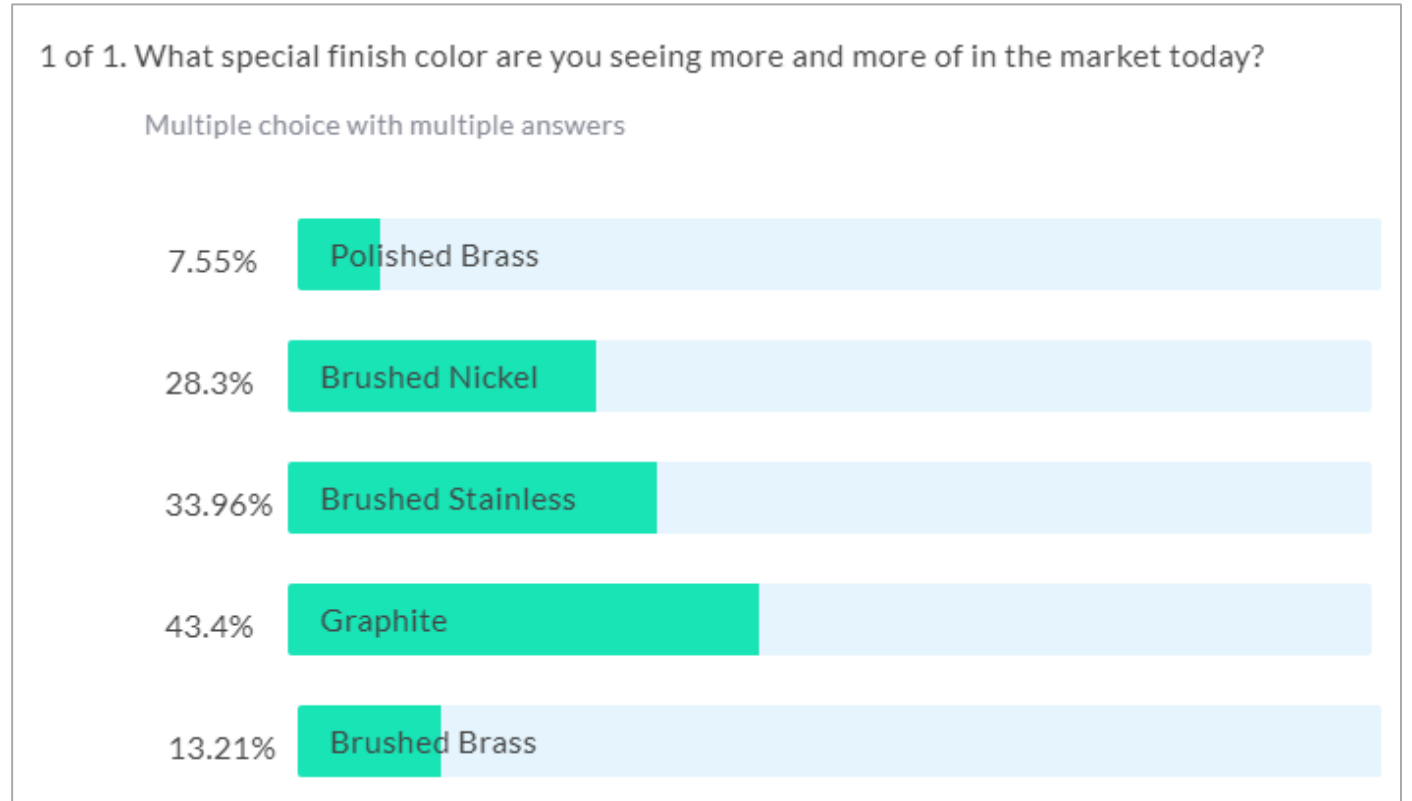
- Sloan manufactures only commercial grade products
- We use PVD special finishes to ensure durability and performance in these demanding environments.
- Sloan special finishes ensure your design vision lasts the life of the building



Image courtesy of Puesto, Basile and Renee Hampton, DELCO Sales, Los Angeles, CA

# Attendee Poll Results

What special finish colors are you seeing more and more of in the market today?



Find your local Sloan representative for more information

[Sloan Rep Locator](#) tool

- Local code knowledge
- Familiarity with existing sites
- Product knowledge
- Available for onsite consultation

### Sloan Customer Care Center

Phone: 800.982.5839

Hours: 7:00 AM - 5:00 PM (CST) Monday – Friday

[customer.service@sloan.com](mailto:customer.service@sloan.com)

### Sloan Technical Support

P: 888.756.2614

F: 800.737.3061

[techsupport@sloan.com](mailto:techsupport@sloan.com)



Mendell Sales, Nashville, TN



A high-angle photograph of a modern public restroom. The room features teal-colored walls and large, light-colored square floor tiles. A long, light-colored vanity with a wooden-grain cabinet underneath is mounted on the wall. The vanity has six dark, cone-shaped faucets. Above the vanity is a large mirror reflecting the room. To the right, a white urinal is mounted on the wall, with a square flush plate above it. Several pendant lights with exposed bulbs hang from the ceiling. The text "Thank You" is overlaid in the center of the image.

# Thank You



# Questions?

# Upcoming Sloan Training Webinar



Thursday September 24<sup>th</sup>, 2020

Introduction to Sloan's  
New Design and Specification Tools  
for Architects and Designers

# Training Comments, Questions, or Suggestions?

Andrew Warnes  
Manager – Technical Training  
Sloan Valve Company  
10500 Seymour Avenue  
Franklin Park, IL USA 60131-1259

Office: +1-800-982-5839  
E-mail: [training@sloan.com](mailto:training@sloan.com)  
Web: [sloan.com](http://sloan.com)