

SLOAN®

Engineered performance
for commercial restrooms

Full Line Fixture Collection



Meeting the challenge with style



If there's one place to test the quality, performance, and durability of a plumbing fixture, it's a commercial restroom. In addition to high traffic volumes, the sheer variety and varying ages of commercial buildings (and water supply systems) can make it difficult for specifiers, architects, and engineers to find solutions that will deliver reliable, long-term performance.

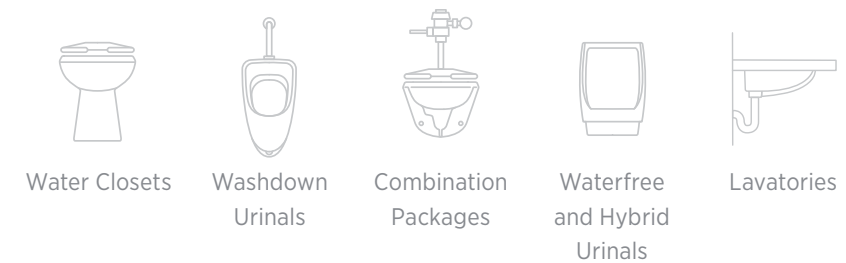
And decreasing flush volumes aren't making things any easier. When the "margin of error" is reduced, it's more important than ever to match fixture and flushometer performance as closely as possible.

As the leader in smart, sustainable restroom design, Sloan is the only manufacturer exclusively focused on the unique needs of the commercial customer.

The total commercial restroom

At Sloan, we have been developing flushometers for more than 115 years. And we've put that experience and knowledge to work engineering fixtures to match the performance that made us the first name in commercial restroom applications. Sloan vitreous china fixtures are engineered for outstanding performance and durability in both retrofit and new construction applications. Our comprehensive lines of water closets, urinals, and lavatories pair perfectly with our industry-leading flushometers and faucets, providing you with the right solution for a wide range of unique applications.

Sloan® Full Line Fixture Collection



Sloan® Standard Washdown Urinal SU-1009 shown with SOLIS® 8186 Flushometer, Designer Series™ DSG-82000 Sink, and EFX-300 Faucet.

Advancing commercial restroom technology

Since Sloan introduced the first flushometer in 1906, we've been constantly searching for ways to improve our products through purposeful innovations that save water, improve hygiene, enhance product performance, and deliver greater value for our customers.



Sloan Gravity Toilets

Our new Gravity Toilet combines Centriflo™ technology, simple assembly, and water-saving features into a sleek two-piece design that fits into a wide range of commercial and residential spaces.



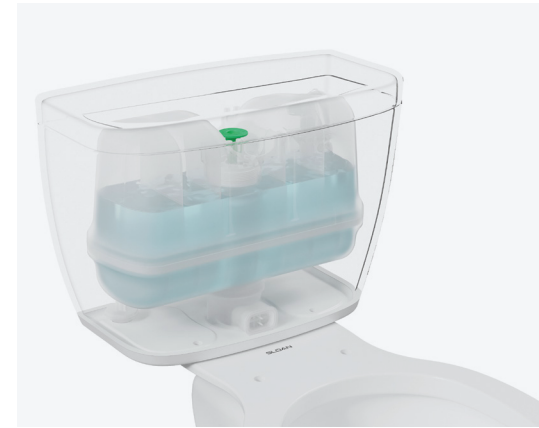
JetRinse® Solution Technology

JetRinse Solution Technology is a proprietary, patented feature that automatically rinses away the accumulated biosolids in the waterfree urinal drain. This feature eliminates the unpleasant task of cleaning the drain nipple between cartridge changes and keeps your urinal operating optimally.



1.1. gpf toilet systems

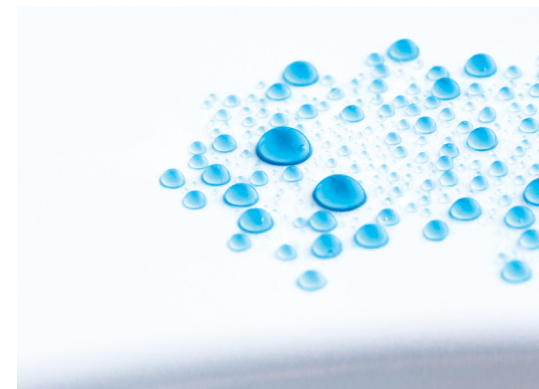
Combine Sloan vitreous china water closets with our high-efficiency 1.1 gpf flushometers and you'll get a system that uses 31% less water than the 1.6 gpf EPA standard. Our 1.1 gpf toilet systems are available with several water-efficient flushometer and vitreous china water closet options.



Sloan Pressure-assisted Toilets

Experience unparalleled performance with Sloan's latest innovation—a pressure-assisted toilet featuring the industry's quietest flush* and lowest gpf at just 0.75 gallons per flush. Perfect for residential and light commercial applications, this groundbreaking toilet helps ensure even the highest-traffic restrooms stay clog-free. Sloan's pressure-assisted fixture paired with Flushmate® vessel technology delivers powerful pressure to push waste farthest* down the drainline, preventing backups and maintaining optimal performance.

Now available as the world's first ultra-high efficiency (UHE) 0.75 gpf — the lowest flush volume in the industry.



SloanTec® Hydrophobic Glaze

SloanTec is a unique and proprietary glaze that imparts permanent hydrophobic (water-repellent) and oleophobic (oil-repellent) properties to vitreous china.

This permanent glaze is unaffected by typical scratches that occur over time and can be observed by measuring the contact angle of a droplet of water. In addition, all fixtures with SloanTec Glaze are Buy American Act (BAA) compliant.

*Based on internal testing.

Compliance with the latest standards

Sloan fixtures are designed to help conserve water and provide access for all commercial restroom visitors. We were the first manufacturer to bring an IAPMO®-listed commercial dual-flush bowl to market, ensuring complete optimization of our 1.6/1.1 gpf dual-flush systems. And we're constantly evolving our designs to enhance the user experience and facilitate installation and maintenance.

Choosing Sloan for your next construction or retrofit project can help you comply with a variety of codes and regulations, including:



WaterSense Listed



Satisfies Leed Credits



Uniform Plumbing Code Certified



California Green Building Code



Americans with Disabilities Act



Buy American Act



Norma Oficial Mexicana



Sloan® Wall-hung Water Closet ST-2459 shown with ROYAL® 111 Flushometer and SU-1009 Urinal with ROYAL 186 Flushometer.

Enduring performance for commercial restrooms

Having been in the commercial restroom business for so long, we've certainly seen a lot of changes in the requirements and technology that have shaped fixture design over the past 115 years. And you'll see that experience reflected in the functional engineering and appealing aesthetics of our complete line of water closets.

Whether you're looking for floor mount, wall-hung, ADA-compliant, with or without bed pan lugs, there's only one way to ensure optimal performance with the first name in flushometers—combining them with Sloan water closets.

All Sloan water closets are available in a variety of flush volumes to suit any application, from 1.28 to 1.6 gpf/4.8 to 6.0 Lpf. Additionally, pressure-assisted water closets are available in 0.75 gpf, and gravity products are available in 1.1 gpf. All models are also available with SloanTec® Glaze (-STG) for added hygienic benefits and BAA compliance.

*Available with left- or right-handle.

Wall-hung



ST-2459 Top Spud
ST-2459-BPL Top Spud Bed Pan Lugs
ST-2469 Rear Spud

Floor mount



ST-2009 Top Spud
ST-2019 Rear Spud

Floor mount TAS



ST-2449 Top Spud

Floor mount junior



ST-2309 Top Spud

Floor mount rear outlet ADA



ST-2229 Top Spud
ST-2229-BPL Top Spud Bed Pan Lugs



ST-2539-LR Rear Spud
Ligature resistant with integral seat

Floor mount ADA



ST-2029 Top Spud
ST-2029-BPL Top Spud Bed Pan Lugs
ST-2039 Rear Spud

Floor mount gravity



WETS-4009* Standard Series
WETS-4029* ADA Series

Floor mount pressure-assist



Now available in ultra-high efficiency 0.75 gpf

WETS-8009* Standard Series
WETS-8029* ADA Series



Sloan® Standard Washdown Urinal SU-1009 shown with ECOS® 186-HW Flushometer.

Maximizing minimal flush volumes

What may seem to be a basic plumbing fixture decision can actually make a world of difference when it comes to water usage—and the restroom visitor experience.

Sloan High-efficiency Urinals (HEUs) are specifically intended for commercial facilities that need to accommodate many restroom visitors and save water. Sloan HEUs use as little as a 0.125 gallons of water—much less than the 1.0 gpf maximum for urinals—and our washdown urinals are engineered to make the most of the minimal flush volume to help ensure your fixtures provide a clean, pleasant experience for every user.

These washdown urinals can be paired with the widest array of manual and sensor flushometers in the industry, including our models designed specifically for reclaimed water systems, giving you the ultimate flexibility to meet your specific application requirements.

Standard



SU-1009 Top Spud 0.125 to 0.5 gpf/0.5 to 1.9 Lpf
SU-1019 Rear Spud 0.125 to 0.5 gpf/0.5 to 1.9 Lpf

Retrofit



SU-1209 Top Spud 0.125 to 0.5 gpf/0.5 to 1.9 Lpf

Small



SU-7009 Top Spud 0.125 to 0.5 gpf/0.5 to 1.9 Lpf
SU-7019 Rear Spud 0.125 to 0.5 gpf/0.5 to 1.9 Lpf

Designer



SU-7409 Top Spud 0.125 to 1.0 gpf/0.5 to 3.8 Lpf
SU-7419 Rear Spud 0.125 to 1.0 gpf/0.5 to 3.8 Lpf



Sloan® Wall-hung Water Closet ST-2459 shown with ECOS® 111 Dual Flush Hardwired Flushometer.

When it all comes together

One of the advantages to designing and manufacturing both flushometers and vitreous china fixtures is the ability to offer them as pre-matched combinations.

Our combination offerings give you a quick and easy way to match Sloan quality and performance in one easy-to-install package.

- A single source for all your specification needs
- The same great after-sale support you have come to expect
- All combination packages are compliant with the Buy American Act (BAA)

Any Fixture, Any Flushometer

Most Sloan water closets and urinals can be combined with any Sloan flushometer.

Water savings made simple

Sloan's innovative flushing technology is available with manual or electronic valves for an ideal pairing with Sloan floor-mount or wall-hung water closets and washdown urinals. Combining a fixture with a flushometer delivers consistent, reliable operation that is designed to help achieve your goals of lowering water usage while maintaining performance expectations.

Sensor

Sensor-activated flushometers (battery or hardwired) provide hands-free operation while delivering significant water savings. See a selection of our most popular sensor flushometers below.

Sensor—battery

Top mount

- G2 8111 or 8186
- ECOS® 8111 or 8186
- SOLIS® 8111 or 8186



Side mount

- Royal® 111 or 186-SFSM
- Royal 111 or 186-DFSM



Sensor—hardwired

Exposed

- Royal 111 or 186 ESS TMO
- Royal 111 or 186 SFSM HW
- ECOS 111 or 186 HW



Concealed

- Royal 152 ESS TMO
- SOLIS 8152
- CX 8158 or 8198 (battery/hardwired)



Manual

Diaphragm or piston, our manual flushometers provide years of exceptional reliability and performance. See a selection of our most popular manual flushometers below.



- Royal 111 or 186
- Regal® 111 or 186
- Sloan® 111 or 186
- GEM-2® 111 or 186
- Crown® 111 or 186
- CX 158 or 198 (concealed)



Save time and effort on your next project, whether new construction or retrofit:

- Healthcare facilities
- Restaurants and hotels
- Stadiums
- Schools and universities
- Transportation terminals
- Office buildings



Sloan® Hybrid Urinal with JetRinse® Solution Technology HYB-1000 shown.

A practical approach to conservation

In a world of increasing water shortages—and increasingly strict usage regulations—conserving water has never been more important.

Since their introduction, Sloan waterfree and hybrid urinals have helped save thousands of gallons of fresh water every year with each installation through the efficient removal of liquid waste.

Innovative cartridge technology

Sloan waterfree and hybrid urinals feature multi-patented cartridge technology for safe, long-lasting, low-odor performance while saving tens of thousands of gallons of water every year. The latest design includes new features to provide optimal performance.

- Keeps pipes and housing cleaner—flexible pour spout combines with a modified cartridge outlet to concentrate and redirect the exiting urine.
- Reduces odor—the cartridge features a reduced surface area that eliminates space for bacteria growth.
- Retains sealant better—diverter combines with the internal baffle to help retain sealant, even if a bucket of water is accidentally dumped into the urinal.



Waterfree Urinal Cartridge WES-150

Waterfree urinals

Sloan waterfree urinals incorporate a world-class, multi-patented urinal cartridge to filter sediment and trap odors, so you get exceptional performance without the use of flushing water. And the vitreous china fixture presents a clean, elegant, and efficient appearance styled to reflect your dedication to sustainability.



Retrofit hybrid urinals make it easy to replace a flushing urinal by using the existing control stop and a familiar water connection.

Hybrid urinals

Sloan® Hybrid Urinals deliver the efficiency of waterfree urinals with the functionality of conventional flush urinals while saving thousands of gallons of water every year. This innovative fixture combines the same world-class, multi-patented urinal cartridge found in our waterfree models with our revolutionary JetRinse® Solution Technology that will keep your urinals and drain lines clean, hygienic, odor-free, and clog-free.

How JetRinse Solution Technology Works:

- Water is supplied to the housing through a solenoid valve.
- The water is directed against the cartridge, redirecting it down the drain line to keep it clean.
- The solenoid valve is programmed to inject one gallon of water every 72 hours.
- An infrared switch allows manual operation of the JetRinse system during cartridge changes.



Standard



WES-1000 Waterfree
HYB-1000 Hybrid
HYB-1000-RET Hybrid Retrofit

Small



WES-4000 Waterfree
HYB-4000 Hybrid



Sloan® Wall-hung Lavatory with 4" Backsplash SS-3103 shown with ETF-600 Faucet.

Promoting hygiene with functional elegance

Sloan vitreous china sinks are available for wall-hung or countertop installation. They are perfect for any application—from executive washrooms to schools, entertainment venues, transportation centers, or government buildings.

Options include a backsplash, wheelchair access, and 4", 8", or single-hole centerset punching. You can also add a ceramic shroud under the sink (select models) for a sleek, clean appearance.

Match a Sloan sink with one of our electronic sensor faucets and soap dispensers. All models are IAPMO tested and certified. Add our revolutionary SloanTec® Glaze to your sink to help keep it clean and BAA compliant.

Pair your vitreous china sink with a Sloan faucet as well as matching soap dispenser (for 20" x 18" ledgeback or undermount lavatories only).

SloanTec Glaze variation (-STG) available for all models
*LH & RH Soap Holes also available

Wall-hung lavatories

Ledgeback
20" x 18" | 508 mm x 463 mm



SS-3106* Single Hole
SS-3006* 4" Centerset
SS-3806 8" Centerset
Optional SS-27-A Shroud available

Ledgeback
21" x 20" | 533 mm x 508 mm



SS-3165 Single Hole
SS-3065 4" Centerset
SS-3865 8" Centerset
Optional SS-27-A Shroud and less overflow models available

With 4" backsplash
20" x 18" | 508 mm x 457 mm



SS-3103 Single Hole
SS-3003 4" Centerset
SS-3803 8" Centerset

With 4" backsplash
20" x 18" | 508 mm x 457 mm



SS-3117 Single Hole
SS-3017 4" Centerset
Enamelled Cast Iron

Wall-hung lavatories

With 4" backsplash
19" x 17" | 483 mm x 432 mm



SS-3055 4" Centerset

Vessel lavatory

Square
19" x 19" | 483 mm x 483 mm



SS-3026 Square Single Hole

Drop-in lavatory

Oval
20" x 17" | 508 mm x 432 mm



SS-3102 Single Hole
SS-3002 4" Centerset
SS-3802 8" Centerset

Undermount lavatories

20" x 18" | 508 mm x 457 mm



SS-3001 Oval

22" x 16" | 559 mm x 406 mm



SS-3021 Rectangle

Healthcare service sink

6.5 gpf | 24.6 Lpf



SS-3200 Top Spud Blowout



Front cover: Sloan® Wall-hung Water Closet ST-2459 shown with SOLIS® 8111 Flushometer and SU-1009 Urinal with SOLIS 8186 Flushometer.

Back cover: Sloan Wall-hung Water Closet ST-2459 shown with SOLIS 8111 Flushometer, SU-1009 Urinal with SOLIS 8186 Flushometer, and AER-DEC® Integrated Sink AD-82000 with stainless steel enclosure.

SLOAN®

Water Connects Us®







World Headquarters

10500 Seymour Avenue
Franklin Park, IL 60131
U.S.A.

800.982.5839
sloan.com

©2024 Sloan Valve Company.
All Rights Reserved.

Follow Sloan

-  @sloan
-  /sloanvalvecompany
-  @sloan_valve
-  @sloan_valve
-  @sloan
-  @sloanvalve