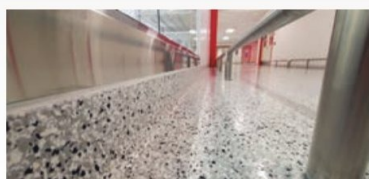


product pipeline



A LIFTS JLG

ES electric scissor lifts feature AC drive motors as standard on models ES1932, ES2632, ES2646 and ES3246, offering peak efficiency, lower energy consumption and maintenance-free operation. The ES4046 and DaVinci AE1932 models also include AC drive motors. Select ES scissor lifts, E18 vertical lifts and the E18 stock picker can be equipped with lithium-ion batteries, available in Lithium or Lithium+ options for extended duty cycles, fast charging and longer lifespan.

B RESTROOM ACCESSORIES Bradley Company

The Elvari Washroom Accessories Collection is a suite of stainless-steel accessories — available in a palette of modern finishes — designed to unify and elevate design in commercial washroom spaces. Featuring a modern euro style pill-shape design with smooth curves and soft edges, the collection includes more than 650 individual products, such as grab bars, paper and soap dispensers, waste receptacles, LED mirrors, hooks, shelves and more.

C FAUCET Chicago Faucets

The 436 High Arc Series of contemporary faucets are designed for high-traffic commercial applications such as teacher's lounges, office break rooms, physician offices and hotel rooms. Washing dishes and filling water bottles are easily accomplished as the 436 Series gooseneck spout swings 360 degrees in either direction along with an adjustable user handle for on/off and hot/cold settings.

D PLUMBING Saniflo

The new Sanipit 24 GR CB is a reliable and hassle-free grinder pump kit — now contained within a heavy-duty, HDPE basin that measures 24 inches in diameter and 24 inches in depth. It is fully packaged and pre-assembled with a built-in 1 horsepower grinder motor, air-pressure mechanism and an external control and alarm system.

E AIR FILTER Metalmark

The Sierra Smoke Safe Filters offer air filtration using advanced materials and technology. It is five times more effective at removing wildfire smoke than typical MERV 13 HVAC filters while maintaining airflow and pressure. Designed as a drop-in replacement for commercial HVAC systems, it is tested and rated as a MERV 13 filter. Its bio-inspired materials and construction ensure long performance. It is useful for educational institutions, healthcare facilities, offices, hotels and restaurants.

F FLOOR COATING Sherwin Williams

Accelera One is an ultra-high solids coating that cures rapidly, enabling the application of two coats within the same day while also providing extended working time for installers. Its strong resistance to harsh chemicals and sterilants makes the product useful for sensitive environments such as pharmaceutical, biotech, life science and healthcare facilities.

G GAS DETECTION Systemair

The gas detection system for car park garages provides real-time monitoring of CO, NO2 and H2 levels. Using UL 2075-certified sensors and intelligent algorithms, it delivers early warnings for potential hazards. Customizable for single- or multi-zone applications, it integrates seamlessly with existing ventilation systems and coordinates with Systemair's Jet Fans for energy-efficient operation. It is useful for parking facilities of any size.

H LEAF BLOWERS RedMax

The EBZ9000 backpack blower and EBZ9000 RH are designed to tackle heavy-duty leaf blowing tasks. The product provides 1,245 CFM and 56 Newtons of blowing force to clear large areas of leaves and debris. An AutoTune feature automatically adjusts the electric carburetor, optimizing performance in varying weather and altitude conditions. Weighing 26.5 pounds, the models feature cushioned, adjustable straps with reflective striping, a supportive hip belt and a ventilated back pad for user comfort.



I MULCHER
Diamond Mowers

Available in 48-inch and 60-inch cutting widths, the SK Disc Mulcher Pro X attachment slices through trees and brush up to 14 inches in diameter and mulches material up to six inches in diameter, making rural storm cleanup more efficient. The attachment can be added to a skid steer to enhance machine productivity.

J DOORS
Stanley Access Technologies

Dura-Storm sliding automatic entrance doors are designed to increase the structural resilience of commercial and public buildings and protect against windborne debris and hurricane-force wind loads. The updated products meet and exceed industry standards, offering options for diverse building regulations. Utilizing code-driven materials including laminated -insulated glass, the doors offer energy efficiency.

K TELEHANDLER
Bobcat

The TL623 offers the extended reach and lift capacity of a heavy-duty telescoping boom combined with multi-attachment versatility enabling operators to tackle a wide range of jobs with one machine. The machine can be used to reach high and stack, then users can change attachments to take the telehandler's productivity beyond pick-and-place tasks. It has a lift capacity of 6,000 pounds and a lift height of 23 feet.

L TOILET
Sloan

The 0.75 gallons per flush, pressure-assisted toilet provides the lowest flush volume available for toilets and helps achieve LEED credits. The pressure-assisted toilets are less likely to back up or clog compared to gravity toilets, and the bowl remains clean due to the rim jets' higher velocity and pressure for each power flush. The toilets are available with an elongated bowl in standard and ADA-compliant heights.

ADVERTISING SALES

Laurie Vega
 Facilities Group Publisher
 (414) 228-7701, ext. 482 • laurie.vega@tradepress.com

Brian J. Terry
 Publisher
 (414) 228-7701, ext. 529 • brian.terry@tradepress.com

Steve Shepherd
 Regional Sales Manager
 (414) 228-7701 ext. 426 • steve.shepherd@tradepress.com

Wendy Brummet
 Regional Sales Manager
 (414) 228-7701 ext. 314 • wendy.brummet@tradepress.com

Kimberly Reed
 Customer & Data Service Specialist
 (414) 228-7701, ext. 441 • kimberly.reed@tradepress.com

ad index

COMPANY	PAGE
Bradley Corporation	15
fnPrime	21
General Pipe Cleaners	3, 17
International Expo-AHR	C3
Koala Kare Products	8
Mean Green	C2
Neoperl	9
Propane Education & Research Council	C4
The Home Depot Rental	11
ULINE	19
Vizilok	20
Wooster Products	12
Zipwall	13